

1. Gateway & Bridge Series
 2. Dimming Series
 3. Relay Series
 4. Climate Series
 5. Guest Room Series
-

| 6. HUMAN INTERFACE SERIES

6.9 Faceplate, 4-8 Btns EU
HF48XXE

7. I/O Series
8. Power Supply Series
9. Multiroom Audio Series
10. Motorization Series



| DESCRIPTION

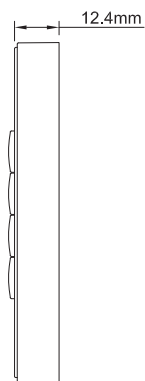
The Green IoT CONTROLS (Green IoT) HF48XXE Faceplate, 4-8 Btns EU is an accessory that can be used to replace a damaged panel/switch or can be an option to get a custom colour to better suits the interior design of a space where it is installed.

| DEVICE FEATURES

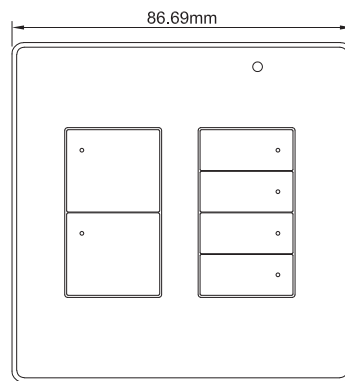
TECHNICAL SPECIFICATIONS

Storage Temperature:	-10°C ~ +55°C
Storage Humidity:	10% ~ 90%
Color:	Black or Custom
Installation:	On Swirch
Device Dimension:	86.69x86.69x12.4mm (WxHxD)
Packing Dimension:	120x115x65mm (WxHxD)
Net Weight:	51g
Gross Weight:	116g

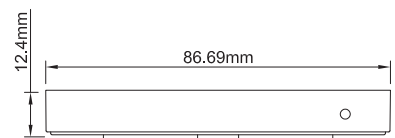
DIMENSIONS



Side View



Front View



Top View

INSTALLATION

Step 1:

Align the faceplate to the switch and click them firmly together (see Figure 1). Screw the metal plate to an appropriate back box on a well levelled surface (see Figure 2).

Step 2:

Insert the back side of the switch through the metal plate at the lower edge of that plate and slide upward to hear a smooth click sound ensuring the firm installation of the switch.

To dismantle the switch, insert the unlock key provided through the gap in the lower frame and slide down gently.

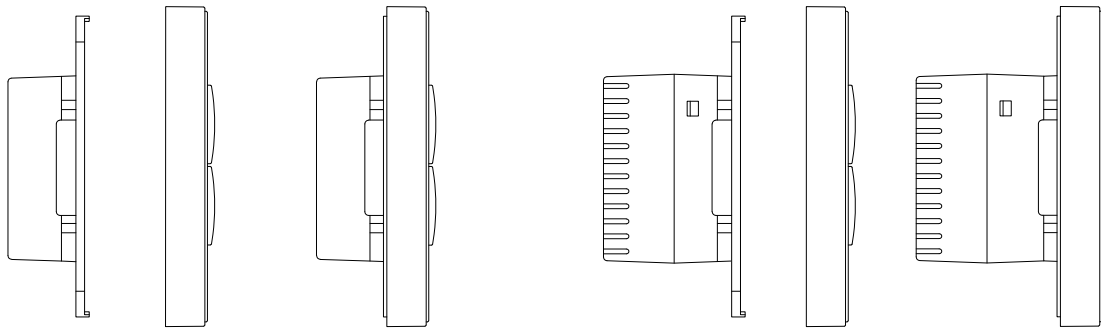


Figure 1

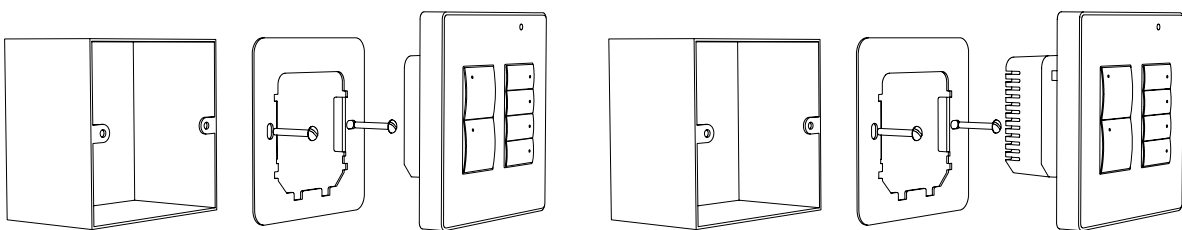


Figure 2

WIRING DIAGRAM

RECOMMENDED CABLES

Module power input cable:

2.0mm² electrical copper wire.

Load output wire:

2.0mm² electrical copper wire.

Recommended cable configuration:

GND = Brown and White + Orange and White

B-(B)= Blue and White + Green and White

B+(A)= Blue + Green

24V = Brown + Orange

